



**Corporate Office**  
 2nd Floor, West Wing, Worldmark 1, Aerocity,  
 IGI Airport Hospitality District, New Delhi - 110 037  
**Tel :** 91 11 42791399 **E-mail :** info@newmika.com  
**Website :** www.greenlamindustries.com

**Greenlam Experience Center**  
 25/B, Shop No. E & F, Mirza Ghalib Road, Park Street,  
 Opposite - West side Mall, Kolkata - 700016.  
**Mob :** - +91-98303-18020; +91 62921-26662  
**E-mail :** experiencecenter.kolkata@greenlam.com

## BRANCH OFFICES

<b>AGRA</b> 9005094737	<b>AHMEDABAD</b> 9909983383	<b>BANGALORE</b> 9686566518	<b>BHUBANESHWAR</b> 9777454095	<b>CHANDIGARH</b> 9779450510 01762-512583	<b>CHENNAI</b> 9500092471 044-42822672
<b>COIMBATORE</b> 9003917470 0422-4370407	<b>DELHI</b> 9650101768	<b>GHAZIABAD</b> 9599962146	<b>GUWAHATI</b> 8134944778 0361-2273306	<b>HYDERABAD</b> 9618898911 040-24801429	<b>INDORE</b> 8884158552
<b>JAIPUR</b> 9818040684 0141-2333747	<b>KOCHI</b> 9746474575 0484-2531598	<b>KOLKATA</b> 9007011903	<b>LUCKNOW</b> 8299566107 0522-4000475	<b>MUMBAI</b> 9930141301 022-26825203	<b>NAGPUR</b> 9158886981
<b>PATNA</b> 9771404756 0612-6450235	<b>PUNE</b> 9730084501 020-26169307	<b>ROHTAK</b> 9896393599	<b>RAIPUR</b> 9752590677	<b>RANCHI</b> 9771400438	<b>VIJAYAWADA</b> 9963110931 0866-2523135

www.newmika.com

NEW MIKA  
 NEW-AGE LAMINATES FROM GREENLAM

NEW MIKA  
 NEW-AGE LAMINATES FROM GREENLAM



SPICE UP  
 YOUR SPACE



# THIS BOOK CONTAINS

IDEAS

EMOTIONS

COLOURS

TEXTURES

INSPIRATION

INSIGHTS

DESIGNS

CREATIVITY

CHARACTER

Every artist needs a canvas. For Greenlam, every home is one. Present across more than 100 countries, Greenlam is India's No. 1, Asia's largest and among the top 3 surfacing solutions brand in the world. With two state-of-the-art manufacturing facilities in the country, it is the first choice of Home Owners, Architects and Interior Designers when it comes to transforming living spaces. Its vast product offerings includes - Laminates, Compacts, Exterior & Interior Clads, Restroom cubicles & locker solutions, Decorative Veneers, Engineered wood floors & doors.





# SPICE UP YOUR SPACE

From the house of Greenlam, comes NewMika, a new and vibrant range of laminates that (to be honest) are much like you. Bold, unique (and packing some serious attitude), our laminates are designed to work wonders with any space. Play with shades of fire, tinker with textures or simply experiment with the eclectic. Whatever your fancy, NewMika is here to make it happen.







# DID SOMEONE SAY 'FEATURES'?

5919 CST



## RESISTANT TO SURFACE WEAR

Our décor surfaces are as tough as they are good looking. They can resist gradual erosion caused by mechanical, physical, and even chemical actions.



## SCRATCH RESISTANT

At NewMika, we don't mess around. Our surfaces can resist scratches caused by sharp objects that are harder than the laminate itself.



## STEAM RESISTANT

With our superior resistance and rating, should things get steamy; at least they won't get sticky.



## BOILING POINT

Friends and neighbours may burn with envy at your new space. It's a good thing then, that our surfaces can easily withstand boiling point.



## CRACK RESISTANT

Cracks can appear for reasons such as atmospheric pressure, humidity, seasonal changes and even jealous neighbours. Our laminates are resistant to all.



## DIMENSIONAL STABILITY

Suitable for any climate or environment, our high quality laminates can handle expansion and contraction quite easily.



## DRY HEAT RESISTANT (AT 180°C)

Worried about heat resistance? Don't sweat it. Our surfaces won't develop blisters even when hot objects are placed on it.



## STAIN RESISTANT

From coffee and wine to turmeric and sauces, our laminates can resist stains and (to make matters better) are even easy to maintain.



# WHAT'S NEW, NEWMIKA?

## DESIGN PALETTE

51 new trendy designs.  
The NewMika range  
offers a variety of  
light to mid tone  
décors in the family of brown and grey.

## PRODUCT WARRANTY

NewMika now comes with a  
10-year warranty.

## COLLECTION

A large collection of over 350  
décors in various pattern and  
texture.



## OUR NETWORK

NewMika is widely circulated  
across states and over 300 cities  
of the country. What's more,  
NewMika is now a global brand  
with its footprints in APAC, the  
Middle East, and Africa.



**2**

**NEW ARRIVALS**

Style that'll cause a stir

**5**

**WOODS**

Nature. Minus the bear attacks

**7**

**ABSTRACT**

Laminates from another dimension

**11**

**SOLID**

Solid picks all around

**15**

**METALS**

Glamour. With all the glimmer

**19**

**DIGITAL**

Outdated neighbours, guaranteed

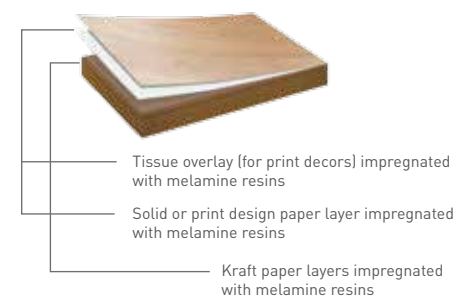
**GET SPICY**  
**GET STARTED**





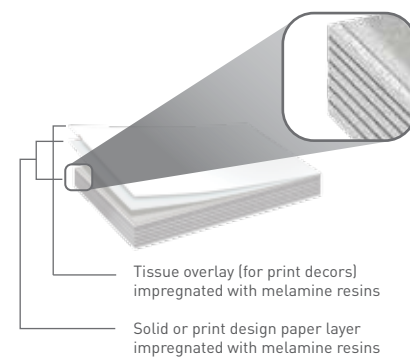


**Regular Laminate Construction**

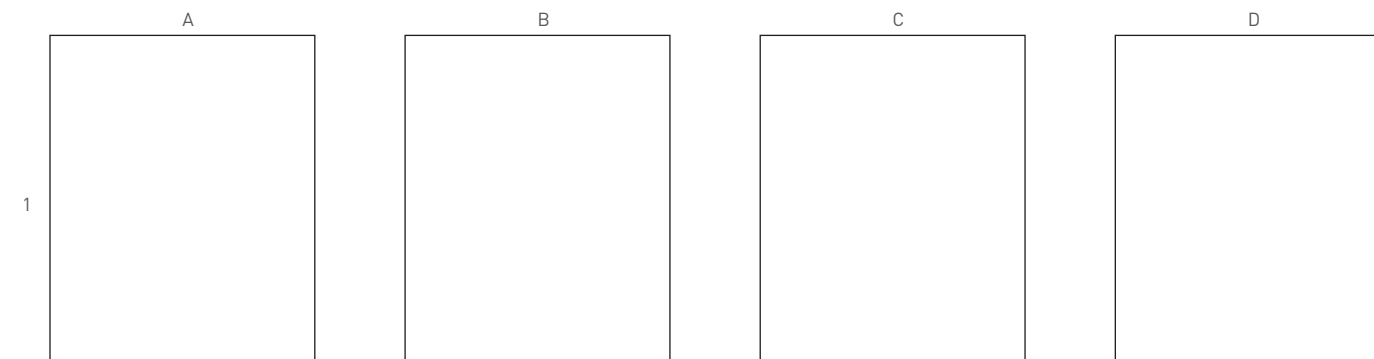


**Unicore Construction**

- ▶ One solid colour not only on surface but in the core of the laminate as well
- ▶ Discards dark edges



**FRESH ARRIVALS**



93504 Simply White (NGL)

93646 Black (NGL)

93504 Simply White

93646 Black

[Available in 1 mm thickness]

Note : All Decors are available in Novel Gloss & Suede Finish Available in more Colours

note.....

3794 NGL

3296 NGL



A



3934 Espresso Larice [NGL] **NEW**

B



3296 Summer Walnut [NGL]

A



3309 Ceruse Wood [NGL] **NEW**

B



3129 Canterbury Pine [NGL]

note.....



A



3932 Brun Larice (NGL) **NEW**

B



3399 Rockwood (NGL)

A



3788 Atlantis (NGL) **NEW**

B



3290 Winter Walnut (NGL)

note.....



A

B

C

A

B

C



3068 Light Figd. Wood [NGL]



3069 Dark Figd. Wood [NGL]



3156 Balsam Teak [NGL]



3322 Clement Nut [NGL]



3335 Plush Wood [NGL]



3355 Sapele Exotic [NGL]



3240 Oak Punch [NGL]



3248 Lakari Natural [NGL]



3357 Zingled Zebrano [NGL]



3335 Plush Wood [NGL]



3355 Sapele Exotic [NGL]



3249 Lakari Grey [NGL]



3287 Fine Walnut [NGL]



3206 Cherry Lustre [NGL]



3289 Tranquility [NGL]

note.....



A



3294 Sunbleached Walnut (NGL) **NEW**


B



3355 Sepele Exotic

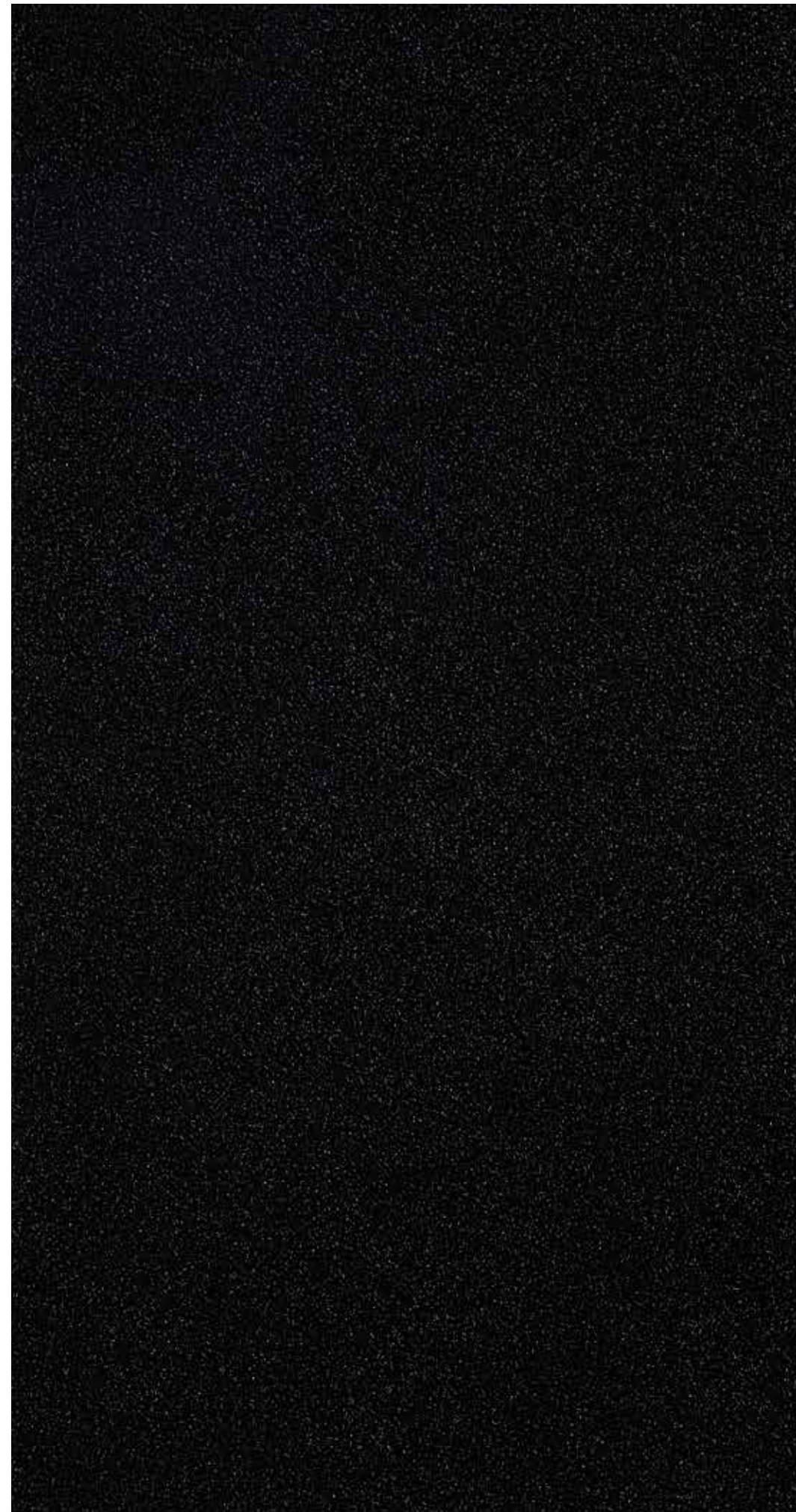


note.....

 3788 NGL



A



5974 Night Starz (NGL) **NEW**

B



5977 Somber Motley (NGL) **NEW**

A



3784 Interlock White (NGL)



3785 Interlock Olive (NGL)

B



5982 Specked Orchoid (NGL)

1

2

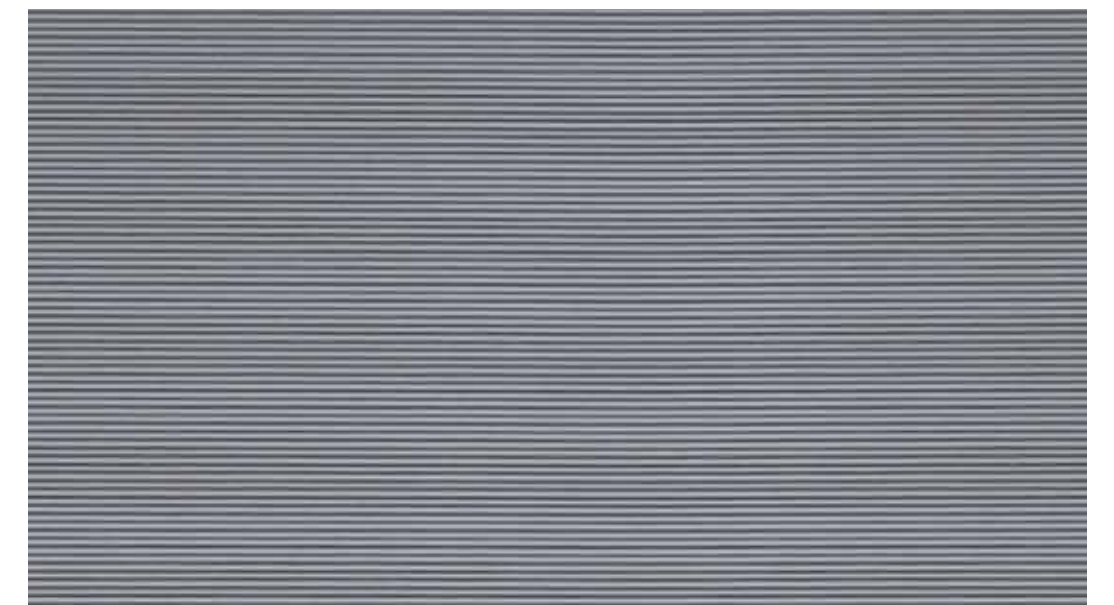


3795 California Jeans (NGL)

2



3761 Majestic Mayhem (NGL)



3822 Grey Canvas (NGL)



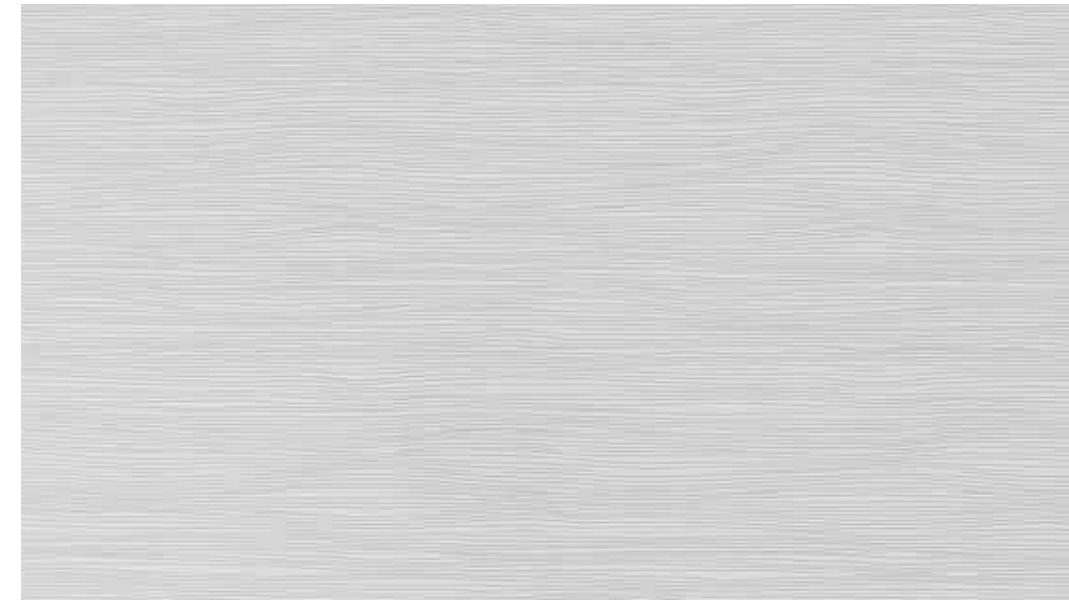
3777 Classic Marble (NGL)

note.....



**ABSTRACT** NOVEL GLOSS

A



PEARLSCENT

3784 Interlock White (NGL)

B



3785 Interlock Olive (NGL)

1

2

2



PEARLSCENT

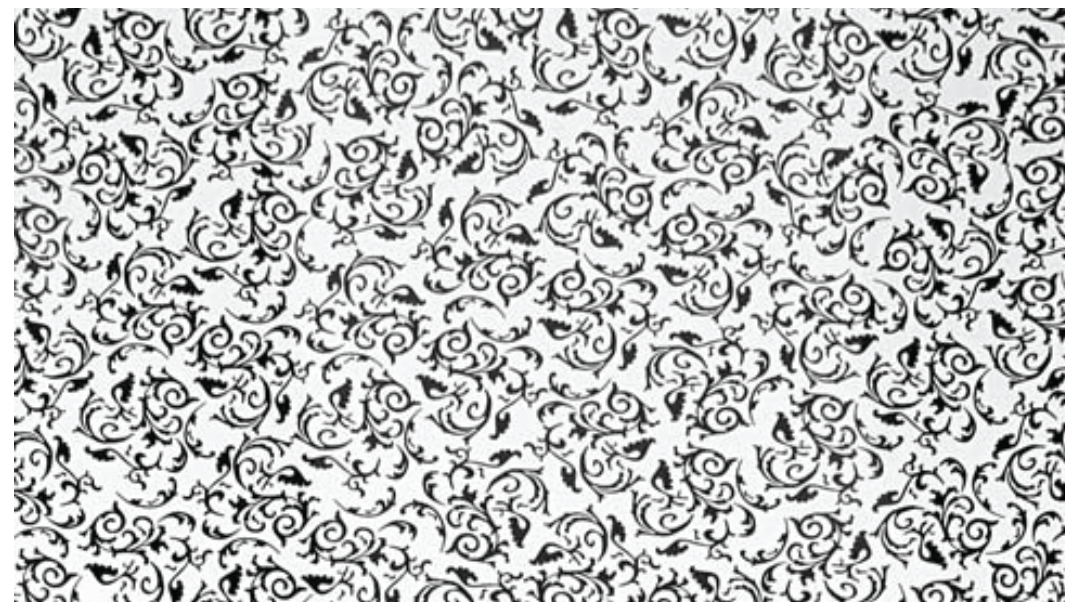
3793 Sheer Concrete (NGL)



3794 Concrete Raven (NGL)



5921 Natural Oyster (NGL)



3761 Majestic Mayhem (NGL)

**SOLID** NOVEL GLOSS

A

B

C

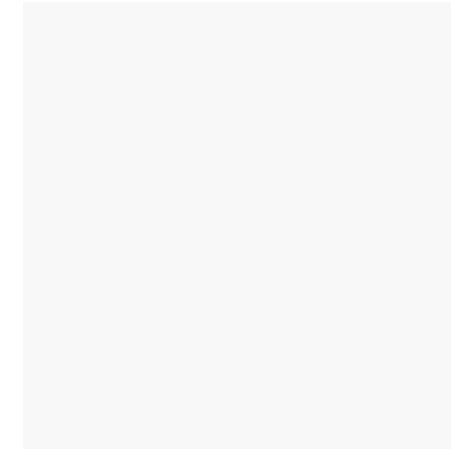
D

1

2

3

4



3501 White (NGL)



3502 Satin White (NGL)



3515 Royal Ivory (NGL)



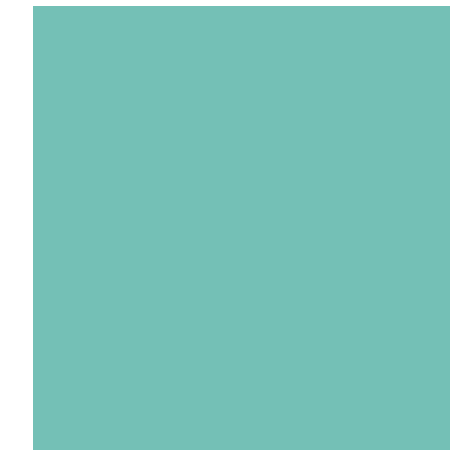
3521 Khaki (NGL)



3561 Grey Out (NGL)



3564 Fossil Grey (NGL)



3572 Cyan (NGL)



3587 Lapis Blue (NGL)



3613 Sunset (NGL)



3615 Citrus (NGL)



3622 Red Flame (NGL)



3634 Black Current (NGL)



3646 Black (NGL)



3651 Clay (NGL)



3711 Beaver (NGL)

note.....







A



3156 Balsam Teak (ATN) **NEW**

B



3298 Ambassador (ATN)

A



3310 Ceruse Grey (ATN) **NEW**

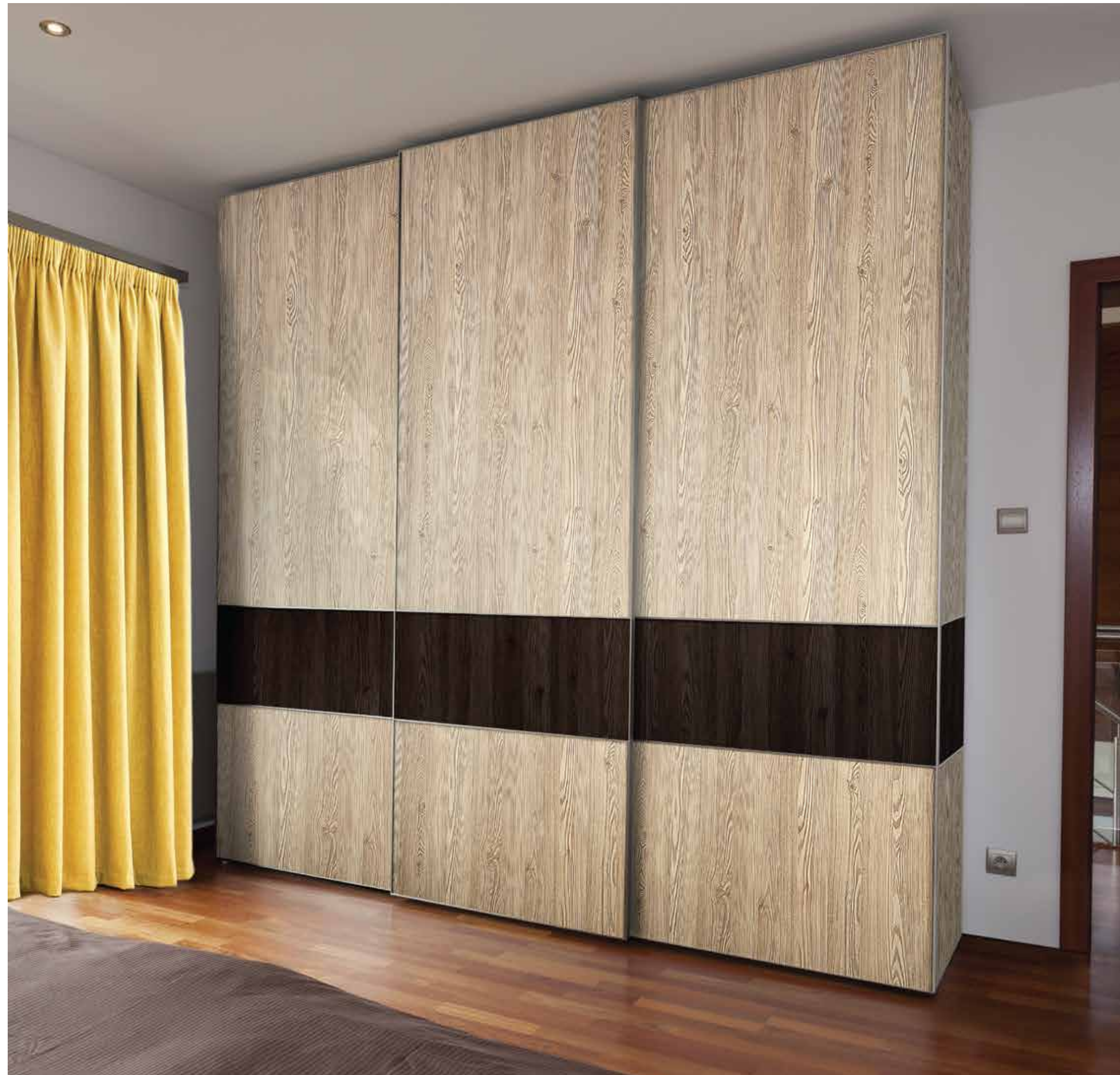
B



3250 Sandrift Oak (ATN)

note.....





A



3931 Siberian Larice (RE) **NEW**

B



3934 Espresso Larice (RE)



A



3933 Russet Larice [RE] **NEW**

B



3932 Brun Larice [RE]



 3309 BHW

note.....



A

B



3056 Ample Maple (BHW)

3067 Seattle Maple (BHW)



3243 Mineral Oak (BHW)

3244 Alloy Oak (BHW)



3309 Ceruse Wood (BHW)

3295 Brunette Walnut (BHW)



note.....

■ 3289 SPC



A



3094 Renewal Oak (SPC)



3290 Winter Walnu (SPC)



3292 Walnut Warmth (SPC)



3376 Bookmatch Shadows (SPC)

B



3289 Tranquility (SPC)



3375 Bookmatch Greige (SPC)



3337 Seasons (SPC)



3933 PGR

note.....



A

B

C

A

B

C

1



1



3161 Fine Teak (PGR)

3221 Polished Wood (PGR)

3933 Russet Larice (PGR)

3931 Siberian Larice (RBK)

3066 Tacoma Maple (RBK)

3164 Brewed Teak (RBK)

2



2



3223 Vetican Oak (PGR)

3278 Walnut Crust (PGR)

3373 Hush Sucupira (PGR)

3287 Fine Walnut (RBK)

3066 Tacoma Maple (RBK)

3164 Brewed Teak (RBK)

3



3



3374 Absolute Sucupira (PGR)

3396 Chalk Paint (PGR)

3397 Carbon Paint (PGR)

3373 Hush Sucupira (RBK)

3374 Absolute Sucupira (RBK)

note.....





A



3297 Sepia Walnut [ENG]

B



3067 Seattle Maple [ENG]



**ENGRAVED**

A



3286 Walnut Wool (ENG)



3334 Wood Aglow (ENG)



3358 ELM Spring (ENG)

B



3305 Dim Ash (ENG)

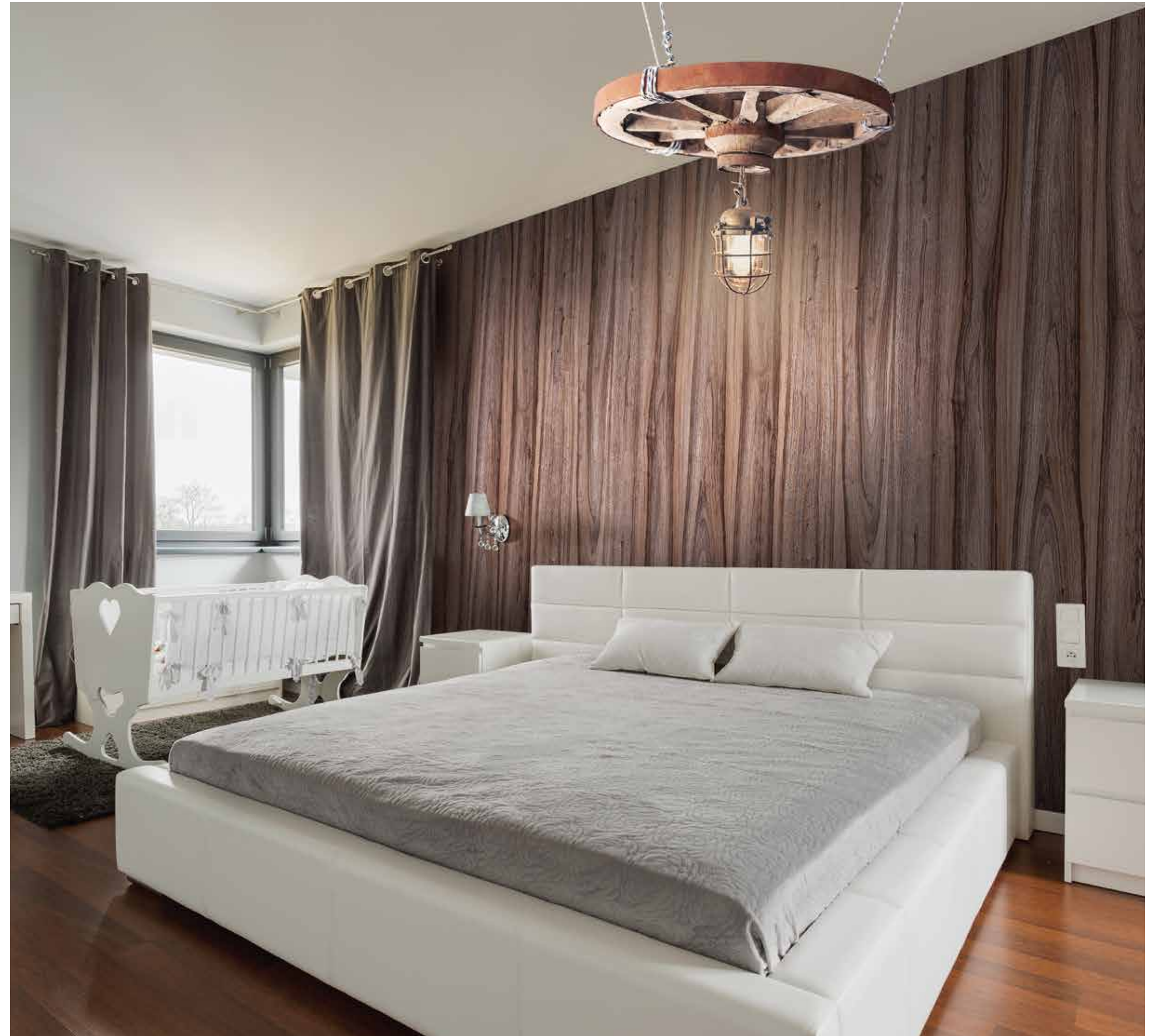


3336 Cult Wood (ENG)



3911 Green Bamboo (ENG)

**CHISELED WOOD**



note.....

 3297 ENG



A



3162 Pure Teak (CHW) **NEW**

B



3285 Walnut Glow (CHW)

A



3287 Fine Walnut (CHW)

B



3288 Wild Walnut (CHW)

C



3306 Chafed Ash (CHW)



3307 Crude Ash (CHW)

1

2

3



3308 Minced Ash (CHW)



3322 Clement Nut (CHW)



3323 Whole Nut (CHW)



3331 Virgin Elm (CHW)



3332 Swiss Elm (CHW)



3333 Novel Elm (CHW)

note.....





A

B

C

A

B

C



3129 Canterbury Pine (VOD)



3245 Oak Solace (VOD)



3247 Coarse Oak (VOD)



3243 Mineral Oak (GLZ)



3287 Fine Walnut (GLZ)



3288 Wild Walnut (GLZ)

note.....



**META SPELL**

A



3264 Fair Play (MTS)

B



3267 Swanky Woods (MTS)

**WOODGRAIN SUEDE**



note.....

3310 SUD



A



3310 Ceruse Grey

B



3309 Ceruse Wood

A



3129 Canterbury Pine

B



3399 Rockwood

1

2

2



3285 Walnut Glow



3206 Cherry Lustre



3034 Blushing Rosewood



3297 Sapia Walnut



3295 Brunette Walnut



3298 Ambassador

note.....



A

B

C



3081 Chronic Oak

3083 Charred Oak

3084 Fair Teak

2



3085 Teak Synchro

3086 Choco Teak

3



3089 Inventive Oak

3090 Bugged Oak

3121 Striped Pine

A

B

C



3123 Wellington Douglas Pine

3125 Fur Rage

3128 Favored Pine

2



3142 Select Anegre

3151 Nayana Teak

3



3153 Tropical Teak

3154 Dahat Teak

3155 Wild Teak

note.....



# WOODGRAIN

A



3298 Ambassador

B



3310 Ceruse Grey

C



3309 Ceruse Wood



3399 Rockwood

A



3012 Intal Beech

B



3013 Bavarian Beech

C



3014 Blended Beech

D



3015 Snow Beech

1

1

2



3297 Sepia Walnut



3250 Sandrift Oak



3294 Sunbleached Walnut



3295 Brunette Walnut



3296 Summer Walnut



3129 Canterbury Pine

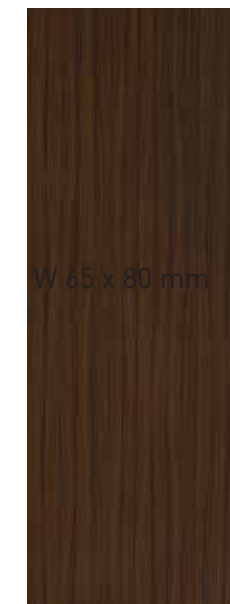
2



3032 Fawned Rosewood



3033 Ashen Rosewood



3034 Blushing Rosewood



3036 Classic Mahogany



3056 Ample Maple



3057 Natural Maple

3



3321 Blanched Nut



3001 Dune Beech



3009 Chocolate Beech



3011 Precious Beech

3



3062 Alberta Maple



3064 Amero Maple



3066 Tacoma Maple



3067 Seattle Maple

W 65 x 80 mm

W 65 x 80 mm

W 65 x 80 mm

W 65 x 80 mm

note.....



A



3267 Swanky Woods

B



3277 Wanton Walnut

A



3288 Wild Walnut

B



3301 Summer Ash

1

1



3278 Walnut Crust



3281 Mocha Walnut



3284 Autumn Walnut



3285 Walnut Glow



3302 Roasted Ash



3304 Elite Ash



3305 Dim Ash



3334 Wood Aglow

2

2



3286 Walnut Wool



3287 Fine Walnut



3335 Plush Wood



3305 Dim Ash



3334 Wood Aglow

note.....



**WOODGRAIN**

A

B

C



3156 Balsam Teak

3161 Fine Teak

3162 Pure Teak

3163 Favored Teak

A

B

C

D



3226 Sumac Oak

3228 Cocoa Oak

3231 White Oak

3232 American Oak

1

1

2

2

3

3



3164 Brewed Teak

3172 Oriental Pear

3202 Miami Cherry

3204 Spice Cherry

3205 Cherry Rain



3233 Sere Oak

3243 Mineral Oak

3245 Oak Solace

3246 Divine Oak

3247 Coarse Oak



3221 Polished Wood

3223 Vetican Oak

3224 Turkish Oak

3225 Accorn Oak



3248 Lakari Natural

3249 lakari Grey

3261 Classique Wenge

3264 Fair Play

note.....



**WOODGRAIN**

A

B

C



3355 Sapele Exotic

3356 Zebrano-Light

3357 Zingled Zebrano

3358 Elm Spring



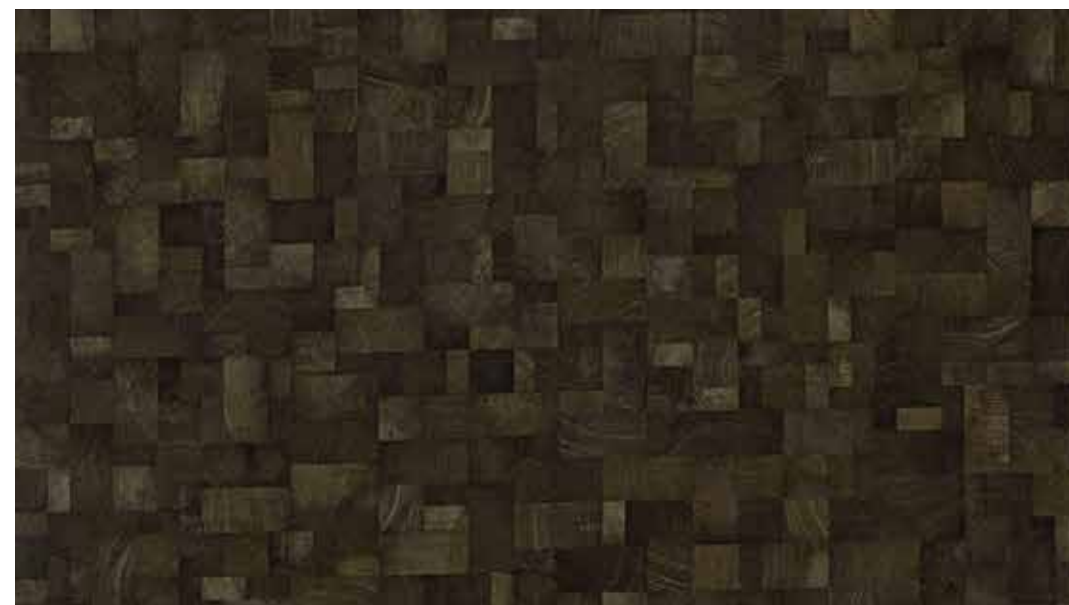
3360 Tawny Mahogany

3362 Misty Limewood

3366 Dainty Elm

3373 Hush Sucupira

3374 Absolute Sucupira



3382 Raw Teak

3388 Lustrous Mosaico

3389 Mystic Mosaico

3390 Native Planks

**WOODGRAIN**

A

B

C



3902 Mali Wenge

3920 White Courd



3960 Supine Teak

3289 Tranquility



3292 Walnut Warmth



3375 Bookmatch Greige



3376 Bookmatch Shadows

note.....





A



1

3902 Mali Wenge

B



3902 Mali Wenge

2



3960 Supine Teak



3960 Supine Teak

3



3292 Walnut Warmth



A



3292 Walnut Warmth

B



3292 Walnut Warmth

A



3292 Walnut Warmth

B



3292 Walnut Warmth

note.....



**CLASSIC QUILTED**



3623 CQT 3371 CQT 3526 SUD

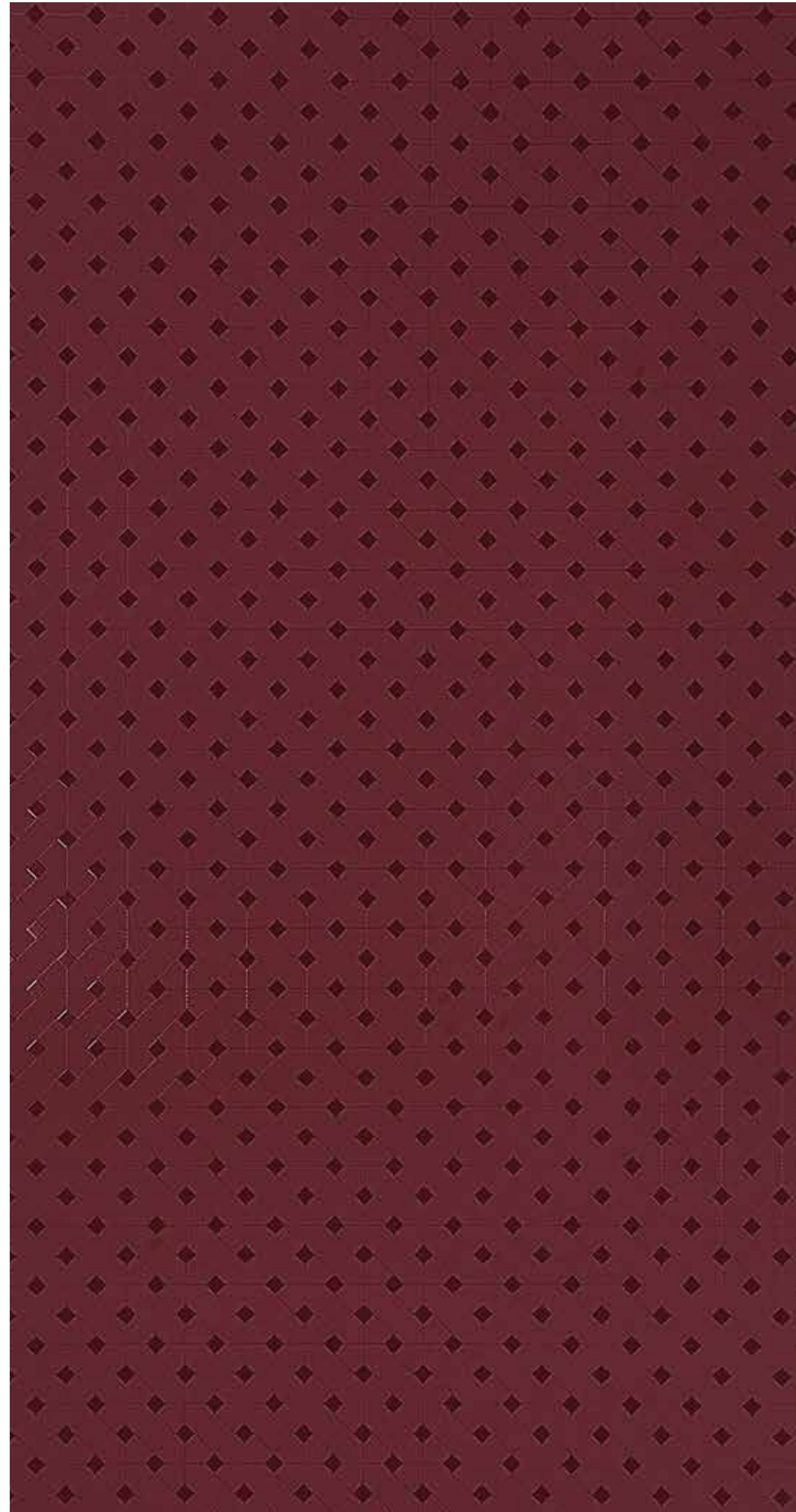


**CLASSIC QUILTED**

**FRESH / ARRIVALS**

**CLASSIC QUILTED**

A



3623 Popping Ruby (CQT) **NEW**

B



5881 Caramel Glaze (CQT)

A



5882 Tawny Glaze (CQT)

B



3371 Como White (CQT)

2



3793 Sheer Concrete (CQT)

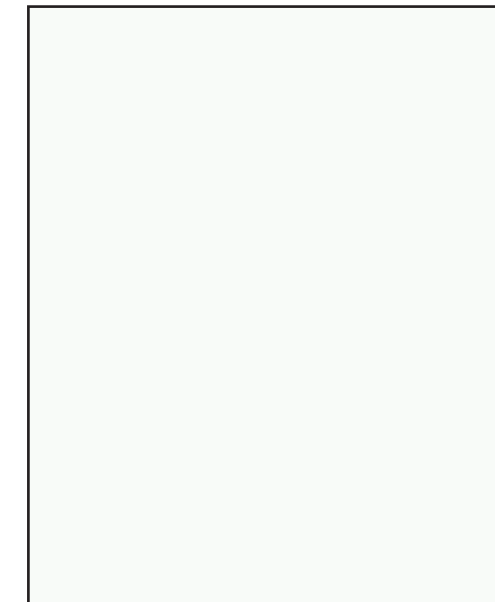


3794 Concrete Raven (CQT)

2



3646 Black (CQT)



3503 Pearl White (CQT)



3523 Barley Pop (CQT)



3711 Beaver (CQT)

note.....



***PAINITED WOOD***

A



3503 Pearl White (PWD) **NEW**

A



3515 Royal Ivory (PWD)



3563 Porpoise Grey (PWD)



3582 Lush Green (PWD)



3646 Black (PWD)

***ENGRAVED***

A



3503 Pearl White (ENG) **NEW**

A



3515 Royal Ivory (ENG)



3622 Red Flame (ENG)



3634 Black Current (ENG)



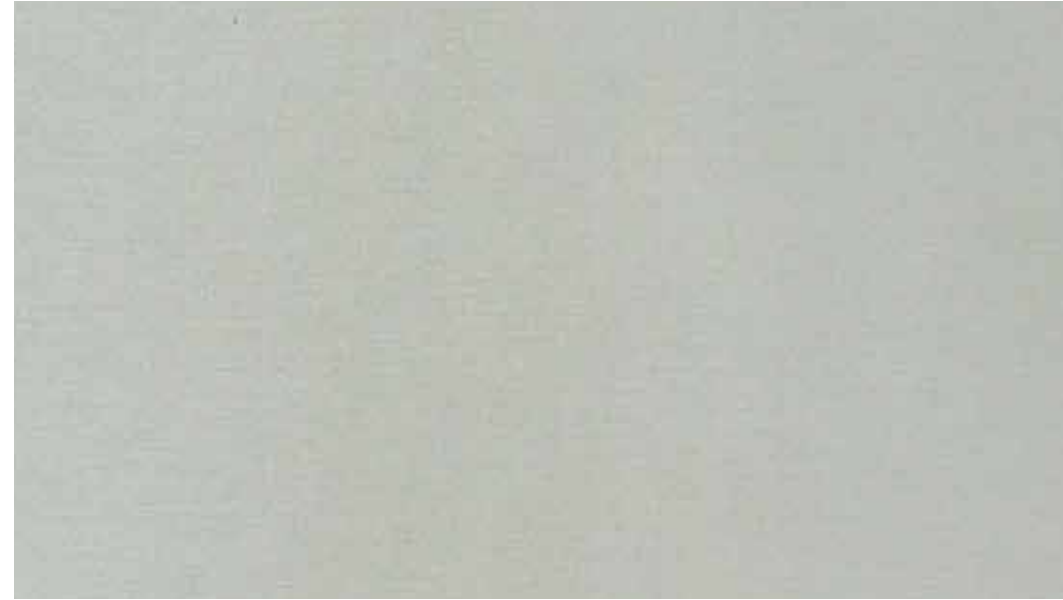
3646 Black (ENG)

note.....



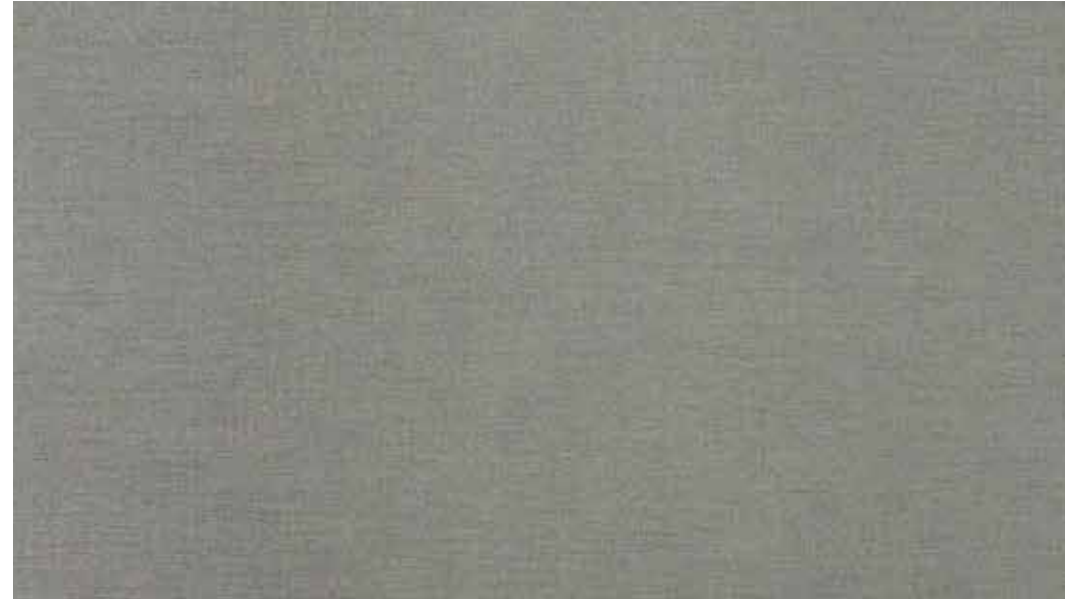
***KHADI & META SPELL***

A



3780 Halaka Cloth (KHD)

B



3781 Sileti Cloth (KHD)

1

2

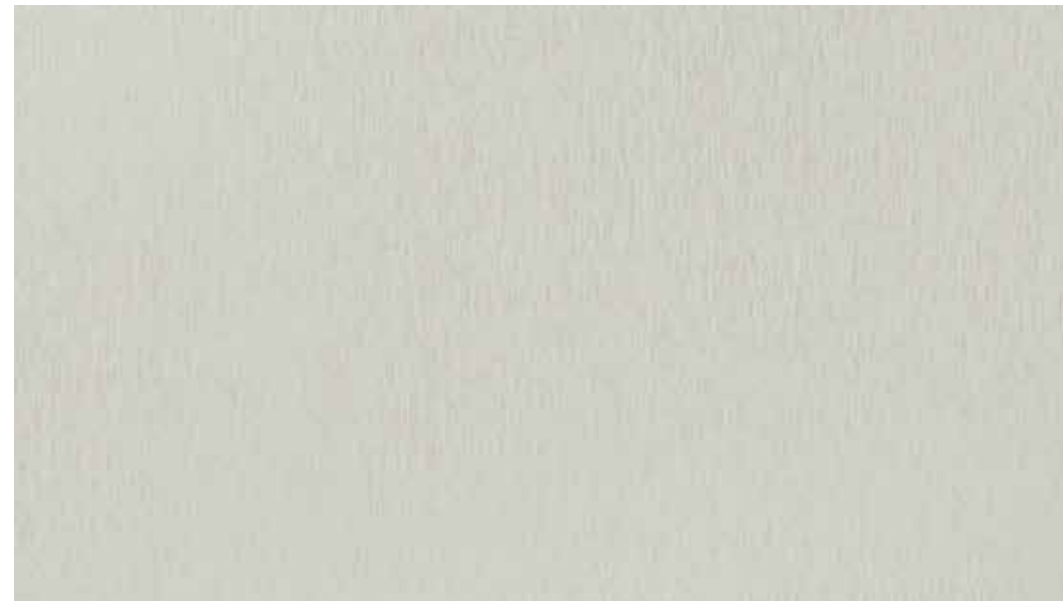
2



3782 Ecrú Cloth (KHD)



3783 Bhura Cloth (KHD)



3264 Fair Play (MTS)



3267 Swanky Woods (MTS)

***SOFT BUFF***

A



3778 Zulfá White (SBF)

1

2

3

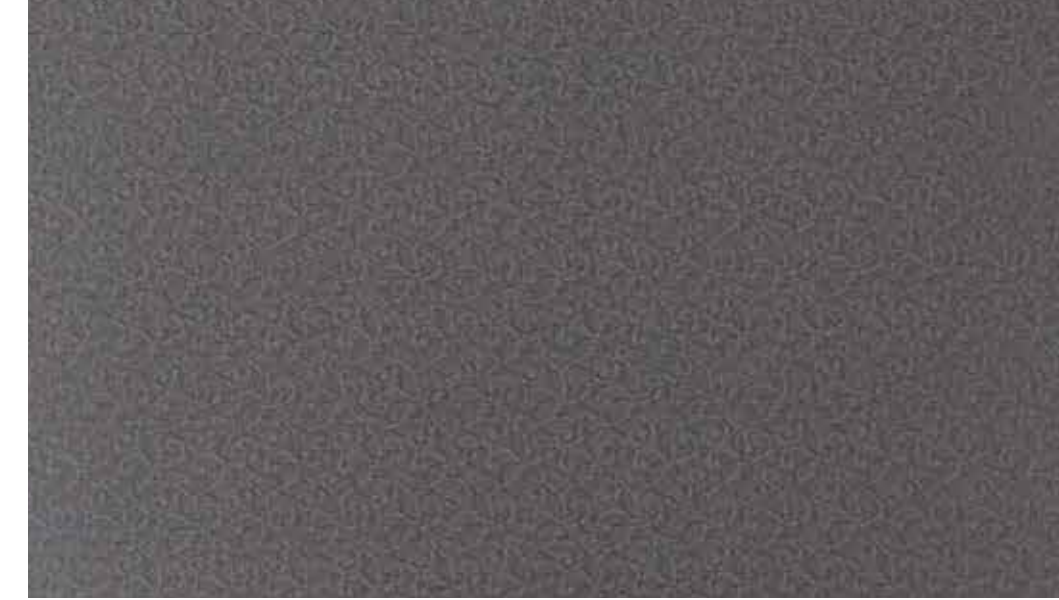


3786 Bouclé Natural (SBF)

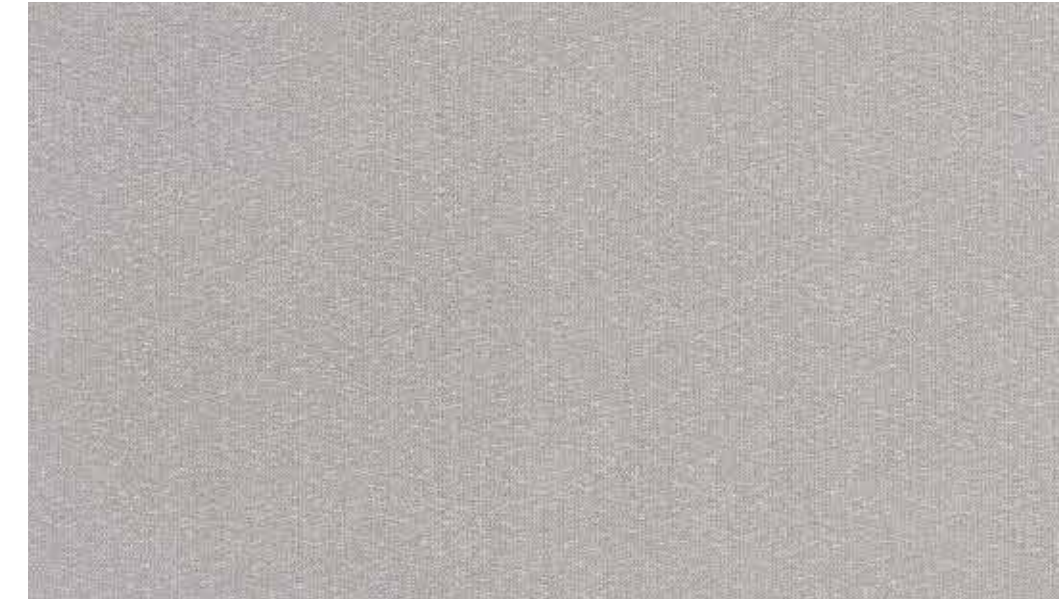


3793 Sheer Concrete (SBF)

B



3779 Zulfá Grey (SBF)



3787 Bouclé Storm (SBF)



3794 Concrete Raven (SBF)

note.....



**ABSTRACT SUEDE**

A



5919 Ebony Marbella (CST) **NEW**

A



3561 Grey Out (CST)

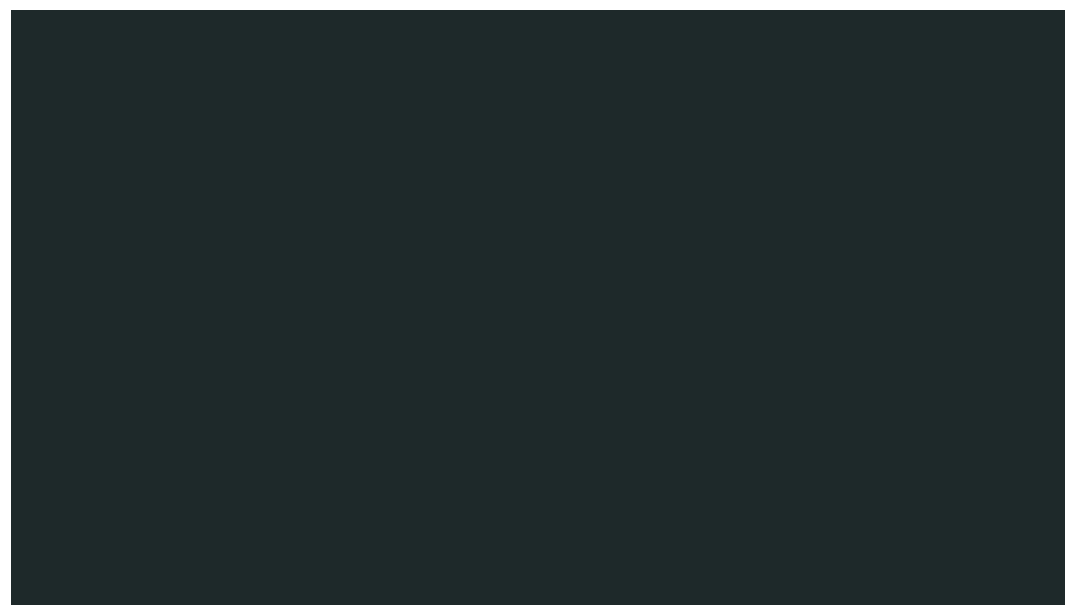
2



3622 Red Flame (ENG)



3634 Black Current (ENG)



3564 Fossil Grey (CST)

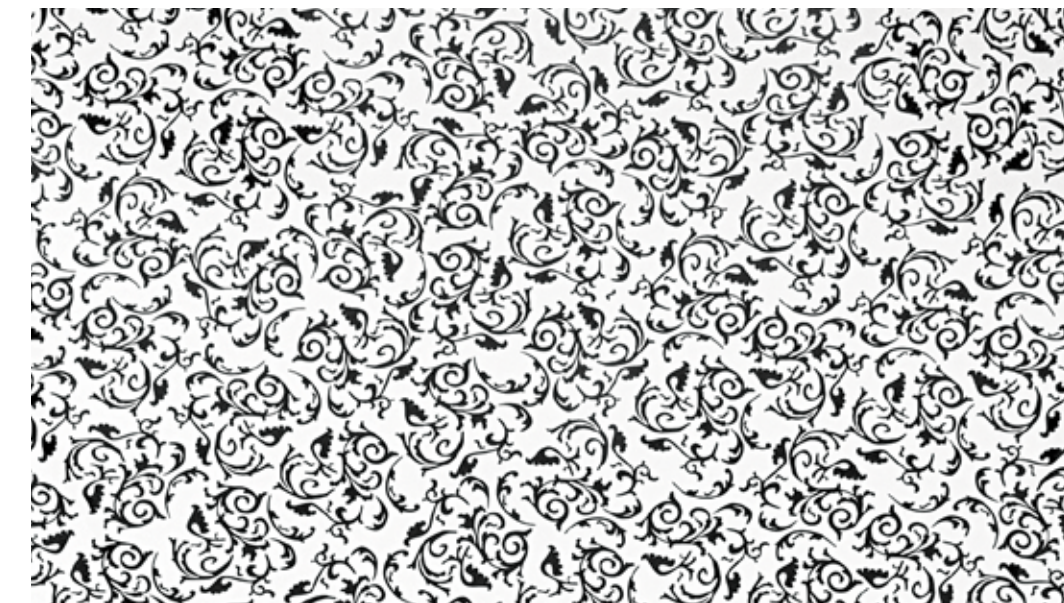
**CLEAVED STONE**

1



3371 Como White

2



3761 Majestic Mayhem



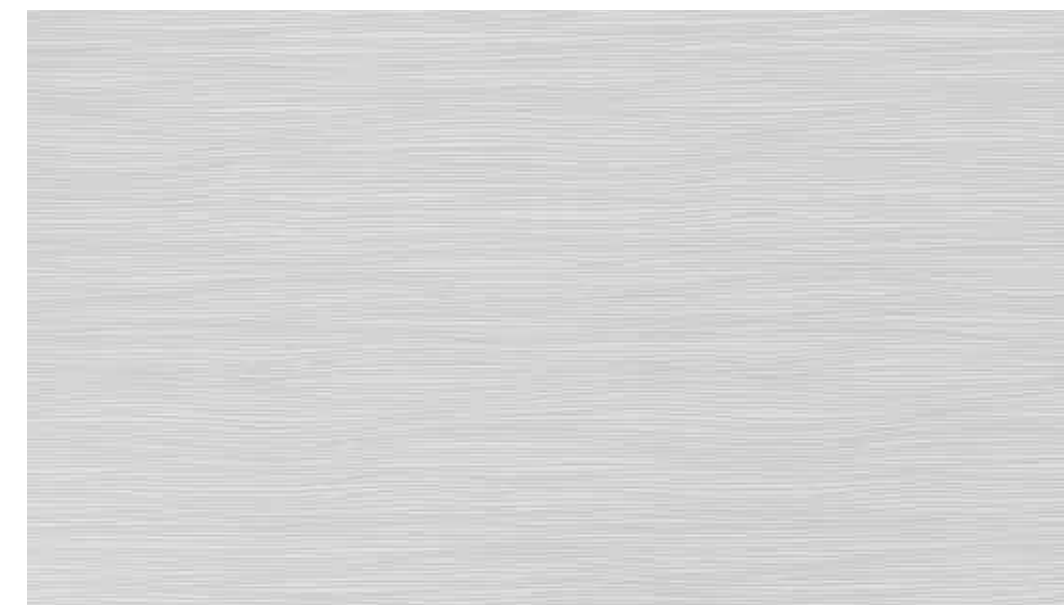
3777 Classic Marble

**METALS**

3



3785 Interlock Olive



3784 Interlock White

note.....





**ABSTRACT MATT**

**FRESH** ARRIVALS



3788 Atlantis



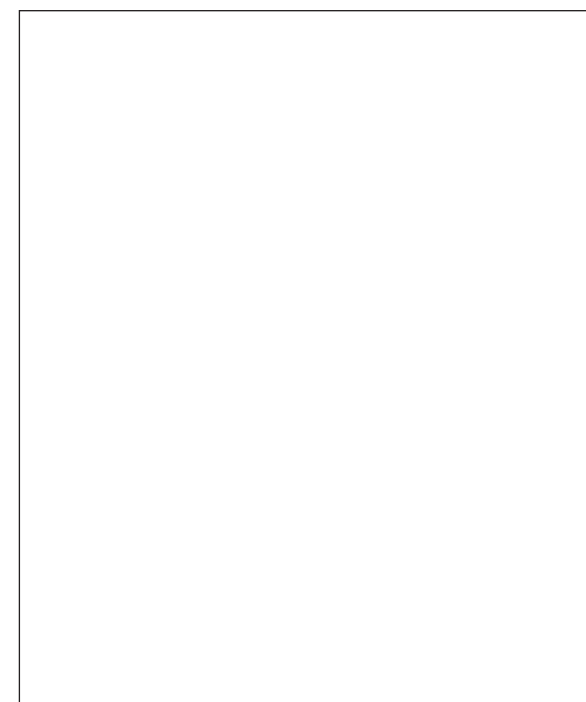
**CHALK & MARKER GRADE**



A

B

C



3597 Avocado Green (Chalk Grade)



3646 Black (Chalk Grade)



3501 White (Marker Grade)

3501 NGL

note.....



3289 SPC



**SOLID POPULAR**

	A	B	C	D	E
1					
	3501 WHITE	3502 SATIN WHITE	3511 ORCHID		
2					
	3551 SILVER	3563 PORPOISE GREY	3646 BLACK		
3					
	3503 CQT PEARL WHITE	3504 SIMPLY WHITE	3515 ROYAL IVORY	3512 CRÈME	3516 VANILLA
4					
	3524 EARTHEN TOUCH	3525 CLEAR SAND	3521 NGL KHAKI	3526 PORCELAIN	3522 COOKIE BROWN
5					
	3562 PEARLY MIST	3559 PLATINUM	3553 NICKEL GREY	3560 FASHION GREY	3564 FOSSIL GREY
6					
	3523 CQT BARLEY POP	3652 TAUPE	3649 BREW	3651 CLAY	3711 BEAVER

**SOLID POPULAR**

	A	B	C	D	E
1					
	3541 FLAMINGO	3544 PRETTY PINK	3633 WILD LILAC	3631 ASTER	3634 BLACK CURRENT
2					
	3543 ROSEATE	3542 PETAL PINK	3545 FUCHSIA PINK	3623 POPPING RUBY	3653 AMBER
3					
	3612 FIESTA	3615 CITRUS	3611 SIENA	3614 ORANGE SHORBET	3622 RED FLAME
4					
	3603 LEMON PEEL	3602 CANDLE LIGHT	3613 SUNSET	3583 FRENCH GREEN	3582 PWD LUSH GREEN
5					
	3576 SOFT FERN	3580 FRESH GREEN	3571 CASCADE GREEN	3569 CASTLETON GREEN	3585 VERDE
6					
	3570 CELESTE	3577 GREEN TEA	3572 NGL CYAN	3596 COLUMBINE	3587 NGL LAPIS BLUE
7					
	3593 INKY BLUE	3595 CORN FLOWER	3594 AMETHYST	3586 BLUE	

note.....

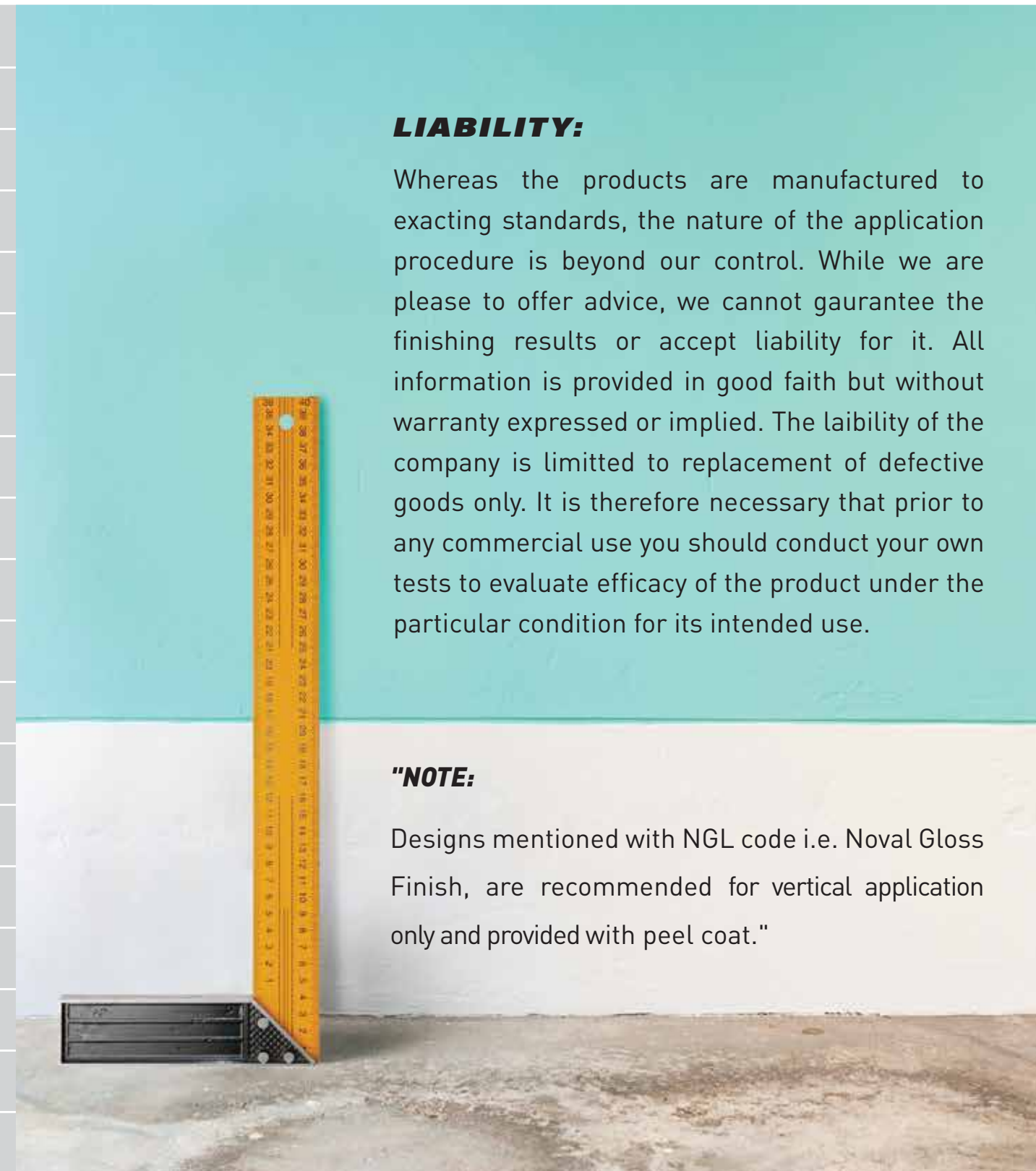


# OFFERED

## FINISH

### ABBREVIATION TABLE

<b>BFL</b>	<b>Buff leather</b>
<b>CHW</b>	<b>Chiseled Wood</b>
<b>CTH</b>	<b>Cathedral</b>
<b>CST</b>	<b>Cleaved Stone</b>
<b>CQT</b>	<b>Classic Quilted</b>
<b>ENG</b>	<b>Engraved</b>
<b>GLZ</b>	<b>Glazes</b>
<b>KHD</b>	<b>Khadi</b>
<b>MTS</b>	<b>Meta Spell</b>
<b>NGL</b>	<b>Novel Gloss</b>
<b>PGR</b>	<b>Pure Grain</b>
<b>RBK</b>	<b>Raw Bark</b>
<b>TRN</b>	<b>Torrent</b>
<b>VOD</b>	<b>Voodoo</b>
<b>XMT</b>	<b>Extra Matt</b>
<b>TDL</b>	<b>Tidal</b>
<b>SBF</b>	<b>Soft Buff</b>
<b>SPC</b>	<b>Simpatico</b>
<b>PWD</b>	<b>Painted Wood</b>



#### LIABILITY:

Whereas the products are manufactured to exacting standards, the nature of the application procedure is beyond our control. While we are please to offer advice, we cannot gaurantee the finishing results or accept liability for it. All information is provided in good faith but without warranty expressed or implied. The laibility of the company is limited to replacement of defective goods only. It is therefore necessary that prior to any commercial use you should conduct your own tests to evaluate efficacy of the product under the particular condition for its intended use.

#### NOTE:

Designs mentioned with NGL code i.e. Noval Gloss Finish, are recommended for vertical application only and provided with peel coat."

## TECHNICAL SPECIFICATION

S.NO	Performance Characteristics	Requirement as per IS 2046: 1995	New Mika Values
<b>Type and thickness</b>		<b>HGS, Thickness 1.0 mm</b>	
<b>1</b>	<b>Dimensional properties</b>		
	Length X Width (2440X1220)mm	+10, -Nil	Conforms
	Thickness, mm	1.0 ± 0.10	Conforms
	Squareness,mm/Mtr	1.5mm, max	Conforms
	Straightnes of edges, mm/Mtr	1.5mm, max	Conforms
<b>2</b>	<b>Resistance to dry heat at 180°C</b>	Not worse than Grade 4	Conforms
<b>3</b>	<b>Resistance to surface wear, Revolutions</b>	350 (Min.)	Conforms
<b>4</b>	<b>Resistance to Immersion in boiling water</b>		
	a) Mass increase, %	10.0 (Max.)	Conforms
	b) Thickness increase, %	11.8 (Max.)	Conforms
	c) Appearance	Not worse than Grade 4	Conforms
<b>5</b>	<b>Dimensional stability at deviated temperature</b>		
	Longitudinal	0.55 % (Max.)	Conforms
	Transverse	1.05 % (Max.)	Conforms
<b>6</b>	<b>Resistance to impact by small diameter ball, Load</b>	20 N (Min)	Conforms
<b>7</b>	<b>Resistance to Color change</b>		Conforms
	In Xenon Arc light	Not worse than Grade 6	Conforms
<b>8</b>	<b>Resistance to cracking</b>	Not worse than Grade 4	Conforms
<b>9</b>	<b>Resistance to scratch</b>	2.0	Conforms
<b>10</b>	<b>Resistance to stain</b>	Not worse than Grade 5	Conforms
<b>11</b>	<b>Resistance to cigarette burns</b>	Not worse than Grade 3	Conforms
<b>12</b>	<b>Resistance to steam</b>	Not worse than Grade 4	Conforms
<b>13</b>	<b>Density (Kg/m3)</b>	1360 – 1400	Conforms

Note: Whereas Greenlam products are manufactured to thorough standards, the nature of the application procedure is beyond our control. The values given above are to the best of knowledge but without liability/warranty, expressed or implied.